

MDR-TB en XDR-TB

- Hierdie word veroorsaak deur nie die instruksies te volg nie oor hoe om die medikasie te drink.

Hoe om MDR-TB & XDR-TB te voorkom

- Voltooi die ses maande lange behandelingstydperk.
- Volg die instruksies van die klinieksuster/dokter.
- Rapporteer enige abnormale gevoel by die kliniek.
- Moenie ooit enige behandeling op u eie staak nie.
- MDR / XDR-TB is 'n laboratoriumdiagnose.



MDR - TB and XDR - TB



health

Department of
Health
FREE STATE PROVINCE

MDR-TB and XDR-TB

- These are caused by not following the instructions of how to drink the medication.

How to prevent MDR-TB and XDR-TB

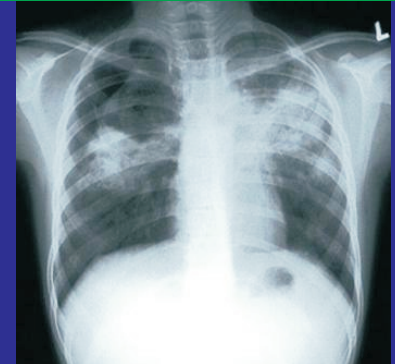
- Complete the six months treatment period.
- Follow the instruction from the clinic sister/doctor.
- Report any unusual feeling at the clinic.
- Never stop treatment on your own.
- MDR / XDR-TB is a laboratory diagnosis

MDR-TB le XDR-TB

- Tsena di bakwa ke hose latele ditaelo tsa ho nwa Meriana.

THIBELA MDR & XDR-TB

- Qeta nako ya pheko ya dikgweni tse tsheletseng.
- Boloko ditaelo tsa moki/ngaka.
- Tlaleha matshwao a sa tlwaelehang kliniking.
- Se kgaotse ho nwa meriana ntle le tumello ya Mooki.
- Ke ka direresults tsa laboratory feela re ka netefatsang hore motho o na le tswaetso ya MDR/XDR-TB.



Toll free number: 0800 53 55 54